

# Product Description

## KIT(P577-D579 DEL)

**Catalog Number:** 26288

**Gene Symbol:** C-Kit; CD117; KIT; PBT; SCFR

**Description:** Anti-KIT(P577-D579 DEL) Mouse Monoclonal Antibody

**Background:** Tyrosine-protein kinase Kit, also known as proto-oncogene c-Kit or CD117 or Mast/stem cell growth factor receptor (SCFR), is a receptor tyrosine kinase protein that in humans is encoded by the KIT gene. Activating mutations in this gene are associated with gastrointestinal stromal tumors, testicular seminoma, mast cell disease, melanoma, acute myeloid leukemia, while inactivating mutations are associated with the genetic defect piebaldism.

**Immunogen:** A synthetic peptide from the internal region of KIT which includes the deletion of P577-D579, human origin

**Tested Applications:** ELISA, WB, IF, IHC

**Recommended Dilutions:**

ELISA:	1:1000-1:5000
WB:	1:500-1:1000
IF:	1:50-1:100
IHC:	1:50-1:100

**Concentration:** 1.0 mg/ml

**Host:** Mouse

**Clonality:** Monoclonal

**Isotype:** IgG

**Purity:** Purified from ascites

**Format:** Liquid

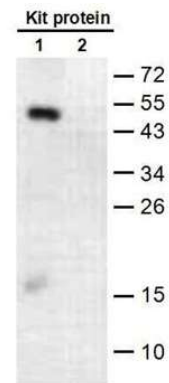
**Preservative:** No

**Constituents:** PBS (without Mg<sup>2+</sup> and Ca<sup>2+</sup>), pH7.4, 150 mM NaCl, 50% glycerol

**Species Reactivity:** Recognizes P577-D579 DEL mutant, but not wild-type KIT of vertebrates.

**Storage Conditions:** Store at -20°C. Avoid repeated freezing and thawing

### Western blot:



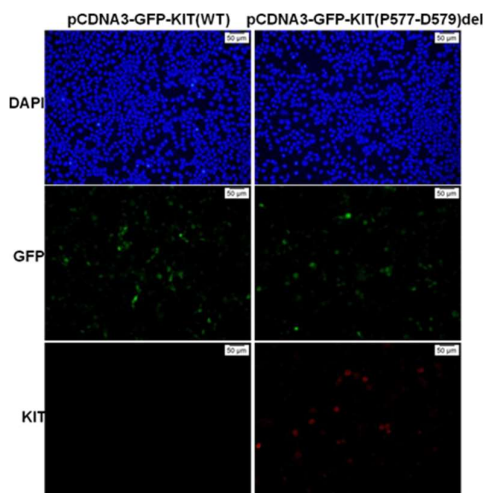
1: Kit P577-D579del protein  
2: Kit WT protein  
WB: anti-Ras (Q61R) mAb

### Western blot analysis of recombinant KIT (P577-D579 DEL) and wild type proteins.

Purified His-tagged KIT (P577-D579 DEL) protein (lane 1) and corresponding wild type protein (lane 2) were blotted with anti-KIT (P577-D579 DEL) monoclonal antibody (Cat. # 26288).

FOR RESEARCH USE ONLY. NOT FOR DIAGNOSTIC APPLICATIONS

**Immunofluorescence:**



**Immunofluorescence of cells expressing KIT proteins with anti-KIT (P577-D579 DEL) antibody.**

HEK293T cells were transfected with pCDNA3-GFP-KIT (WT) plasmid (left column) or pCDNA3-GFP-KIT (P577-D579 DEL) plasmid (right column), then fixed and stained with anti-KIT (P577-D579 DEL) monoclonal antibody (Cat. #26288).

---

**FOR RESEARCH USE ONLY. NOT FOR DIAGNOSTIC APPLICATIONS**